

Swedstyle Cable Tray Work

Hide the cables nice and tidy with a cable tray and create a fully equipped and functional workplace.

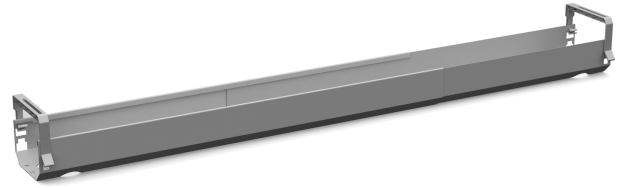
You can easily tilt the tray when you need to access the wires. Adjustable laterally, 955-1690 mm. Two different height adjustments 100 mm or 150 mm. Available in our standard colors silver, white and black. Choose product depending on whether you want to mount the cable tray in the frame (WORK) or in the table top (TABLE).

Art. no	Colour	
50530708B	Silver	
50530740B	Black	
50530725B	White	
50531008B	Silver	table
50531040B	Black	table
50531025B	White	table
50521140B	Black	frame
50521125B	White	frame
50521108B	Silver	frame



Technical specifications

Swedstyle Cable Tray Work



Specification	Value
---------------	-------