

Swedstyle Cable Tray Work

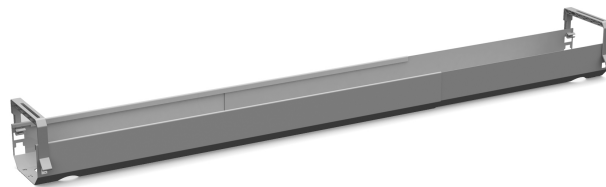
Hide the cables nice and tidy with a cable tray and create a fully equipped and functional workplace.

You can easily tilt the tray when you need to access the wires. Adjustable laterally, 950-1734 mm. Two different height adjustments 100 mm or 150 mm. Available in our standard colors silver, white and black. Choose product depending on whether you want to mount the cable tray in the frame (WORK) or in the table top (TABLE).



Technical specifications

Swedstyle Cable Tray Work



Specification	Value
---------------	-------