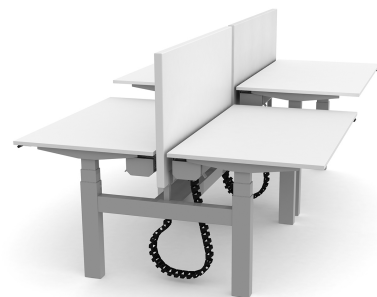


## Swedstyle Cable Tray Work Twin

*Hide the cables nice and tidy with a cable tray and create a fully equipped and functional workplace.*

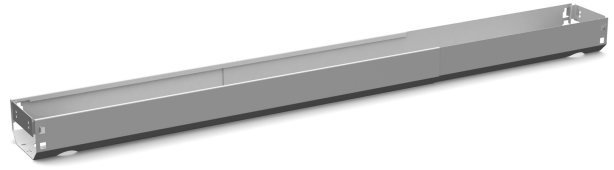
Cable tray mounted on the lower part of our TWIN frame. Adjustable laterally, 955-1690 mm. Height 90 mm. Available in our standard colors black, white and silver. If you want to hide what is in the tray, you can supplement with a Swedstyle Cover Twin.

Art. no	Colour
50530708B	Silver
50530740B	Black
50530725B	White



# Technical specifications

## Swedstyle Cable Tray Work Twin



Specification	Value
---------------	-------