

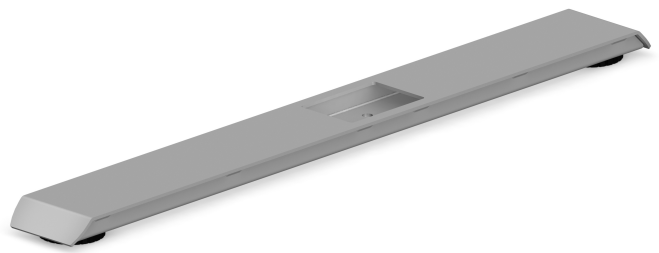
## 45° Lowered Position - Foot U

*Foot lowered position (-20 mm) with 45° angle that fits our Classic frames (not Classic Round). Not centered. Length 718 mm. Available in the colors silver, white and black as standard. Adjustable feet.*

Art. no	Colour
FOTU40B	Black
FOTU25B	White
FOTU14B	Silver

# Technical specifications

## 45° Lowered Position - Foot U



Specification	Value
---------------	-------